

## VECTASAFE® ALU ANCHOR POINT

**STANDARD**  
EN 795  
Class A1

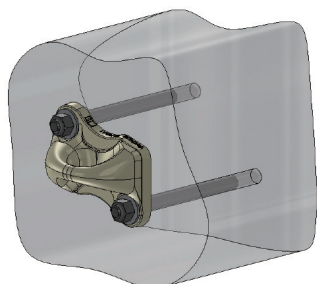
**+ Certified Apave  
for 2 users.**



Ref.: VA01

### Example of assembly:

Fixed on concrete



### Associated product(s):

- Clamping back-plate kit VECTASAFE® - Ref.: VE01.
- Threaded rods kit: L 500 mm M12 stainless steel + lock nuts + washers - Ref.: VF01.


### Advantages:

- Fixed underside or on wall.
- Possible use for suspending work.
- Quick installation.
- Guaranteed against corrosion.
- Higher resistances than the standard requirements.

### Use (see Assembly and use instructions NT001):

VECTASAFE® anchor point ensures the protection against fall from height for 1 to 2 people maximum. It is used to protect the user during maintenance and cleaning works.

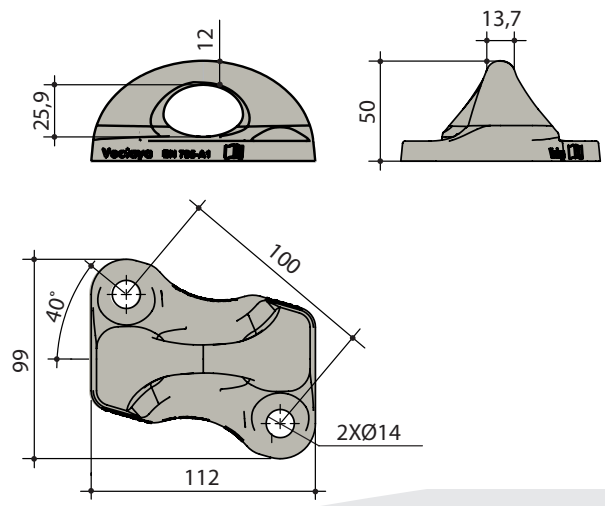
### Technical features:

- Material: aluminium alloy molded.
- Coating: raw, microbead or powder coated (ral colours) upon request:
- Weight: 0.28 kg 
- Maximum load: 1000 daN.
- Not deformable.
- Field of use: inside or outside.
- Complies with the standard EN 795 Class A1.

### Assembly instructions (see Assembly and use instructions NT001):

- The anchor point can be installed on any orientation.
- Fastenings: 2M12, center-to-center distance: 100 mm.
- It should be fixed in concrete C20/C25 with chemical plugs type HILTI HVU M12, SPIT, WURTH or equivalent.

### Product sizes:



FT001-25-01-2013